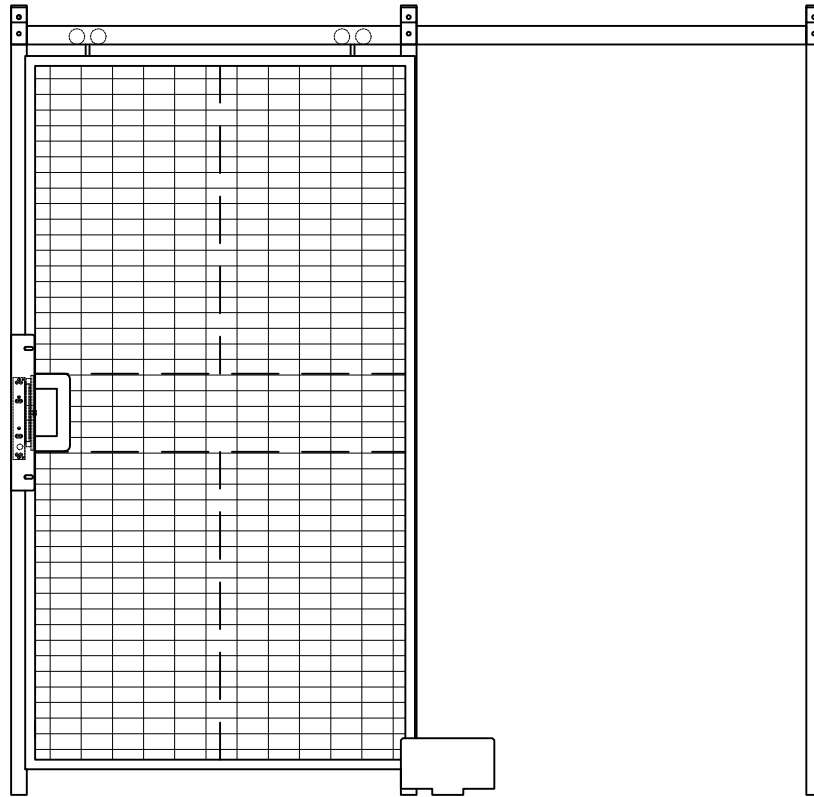


WireCrafters

Magnetic Lock Installation Instructions

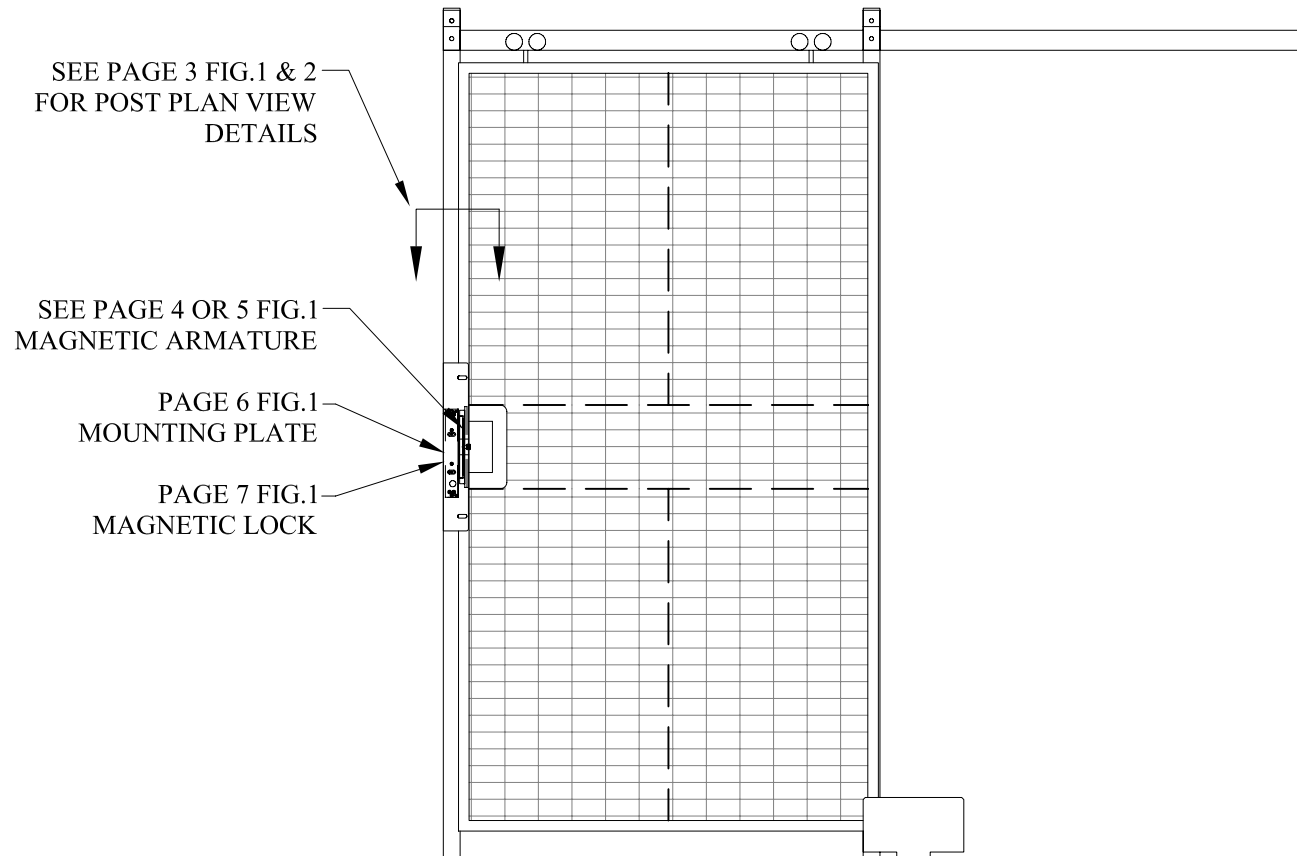


INCLUDED IN THIS MANUAL

Slide Door Elevation	2
Post Plan View Details	3
Armature Outside Door	4
Armature Inside Door	5
Mounting Plate	6
Magnetic Lock	7

Revision 1.3 9/14/12
By: Brandon Green

We're Here To Help
1-800-626-1816
Mon-Fri 8am-5pm ET



ELEVATION
FACESIDE

Notes to Installer

1. Install slide door using WireCrafters installation manual.
Note: Disregard installation of door lock supplied in WireCrafters Installation Manual.

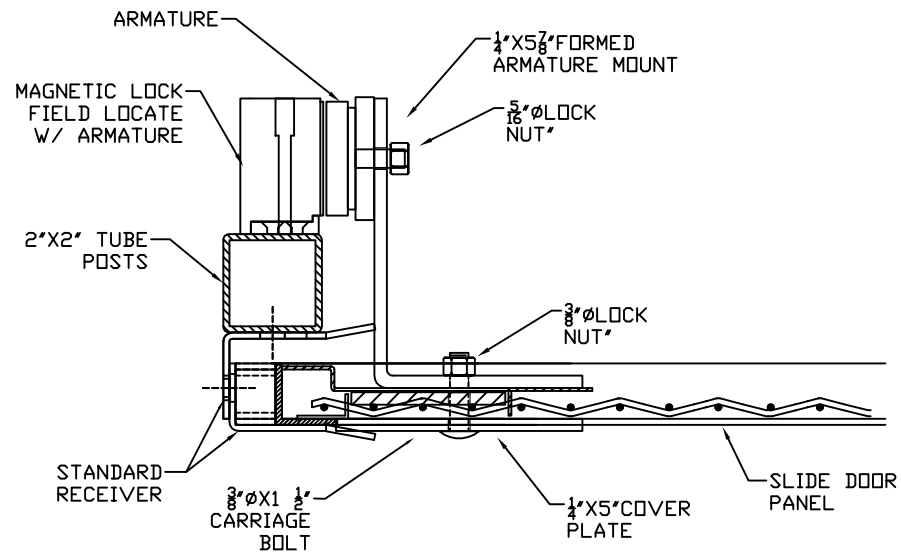


Fig.1

MAGNETIC LOCK DETAIL
OUTSIDE DOOR SHOWN

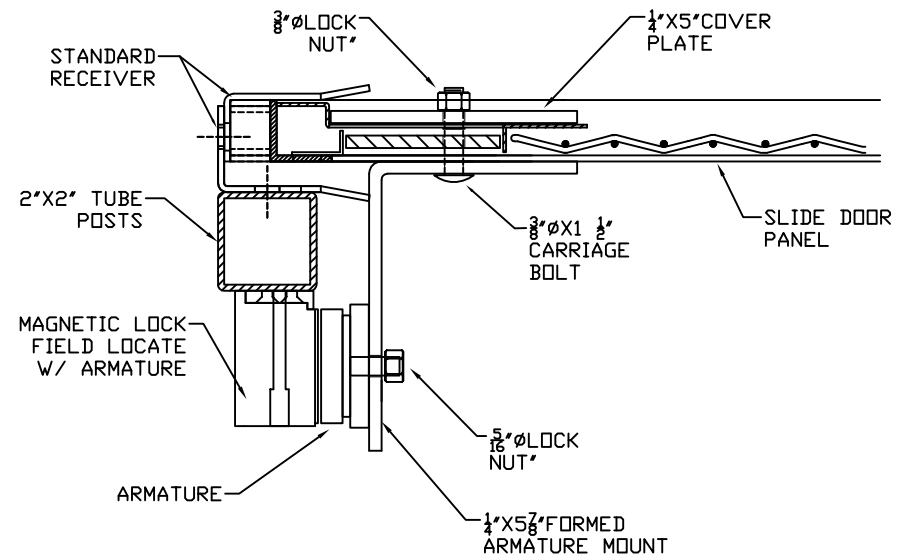
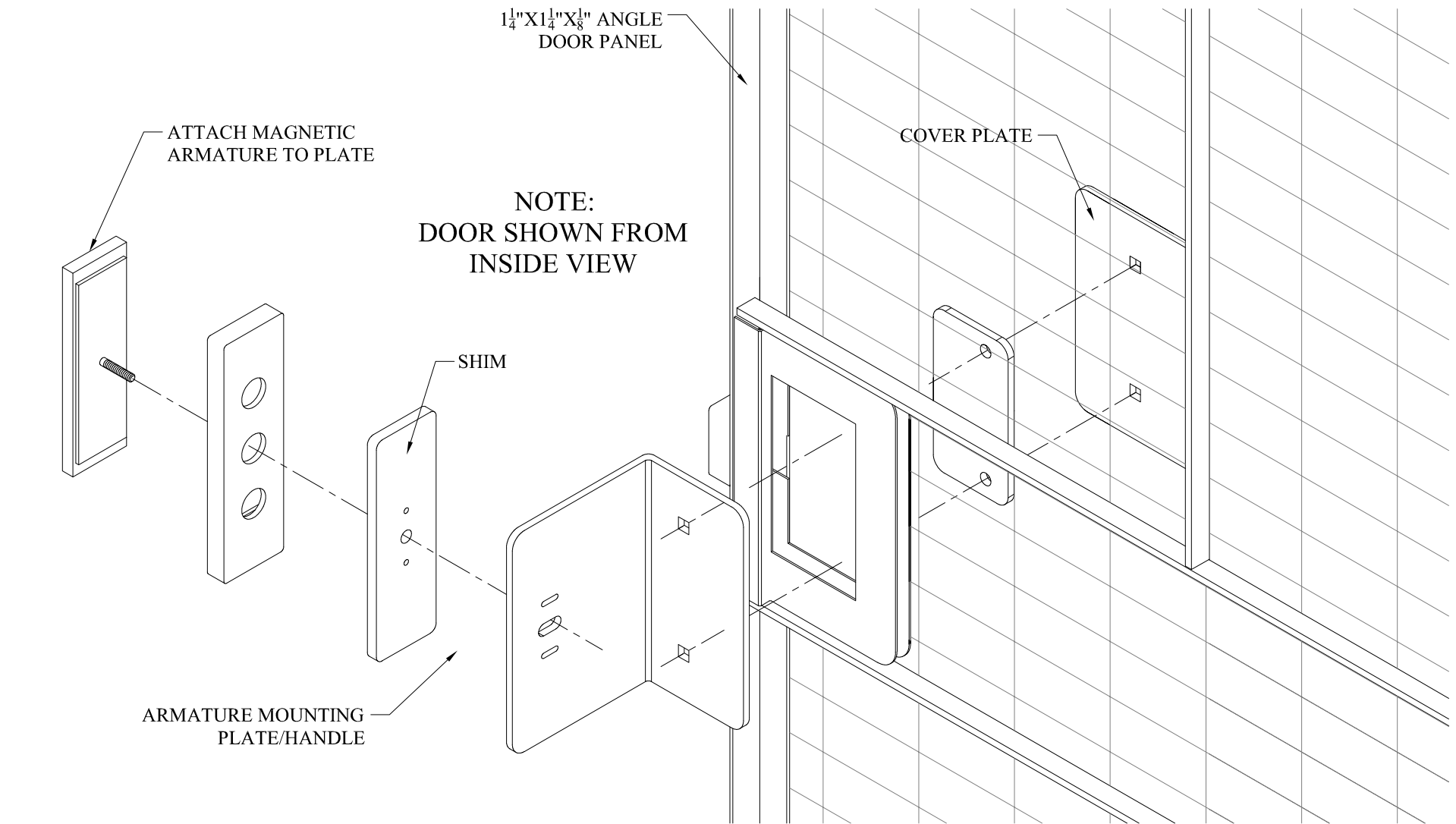


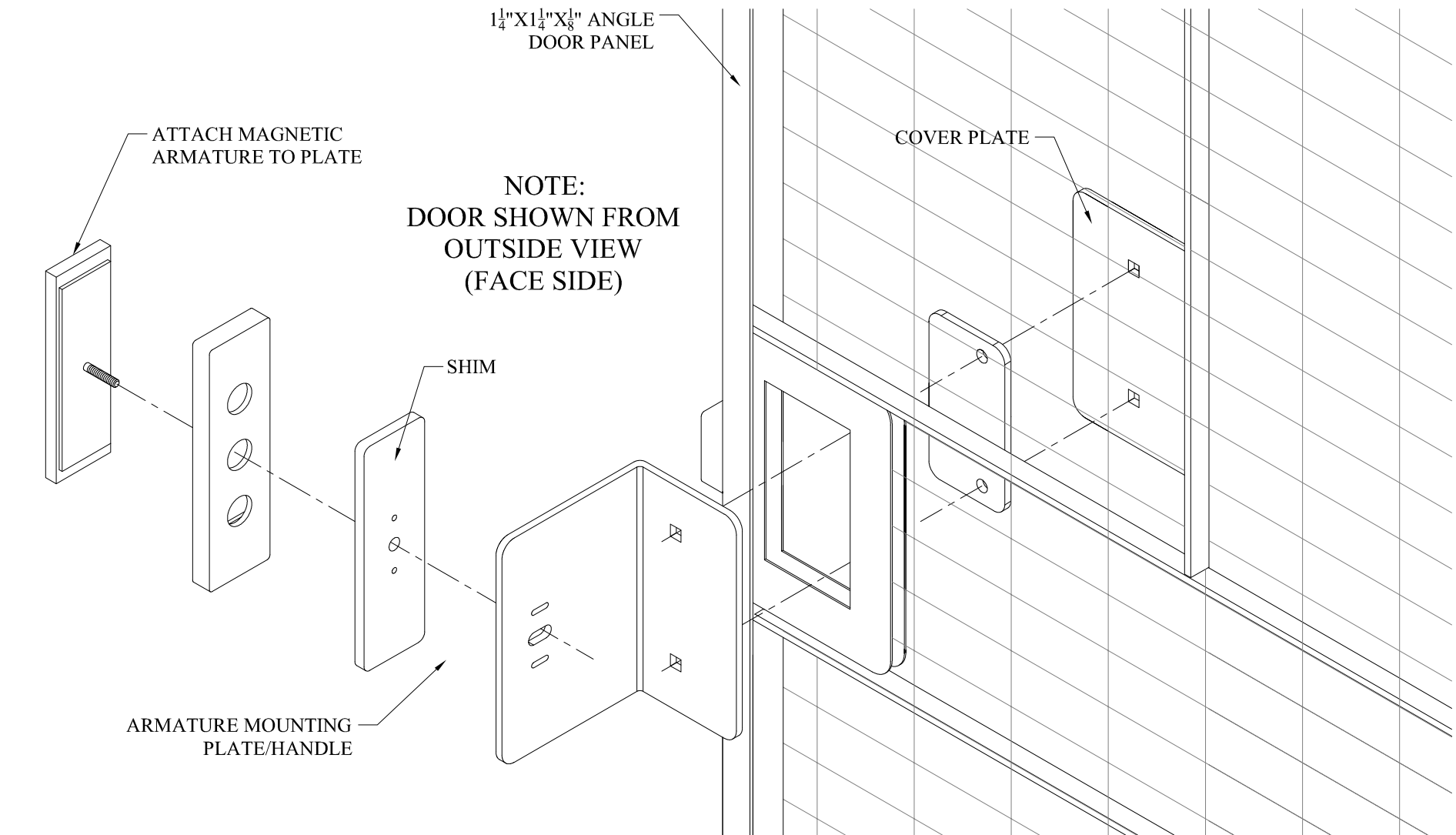
Fig.2

MAGNETIC LOCK DETAIL
INSIDE DOOR SHOWN



MAGNETIC LOCK
OUTSIDE DOOR SHOWN

Fig.1
DETAIL
MAGNETIC ARMATURE



MAGNETIC LOCK
INSIDE DOOR SHOWN

Fig.1
DETAIL
MAGNETIC ARMATURE

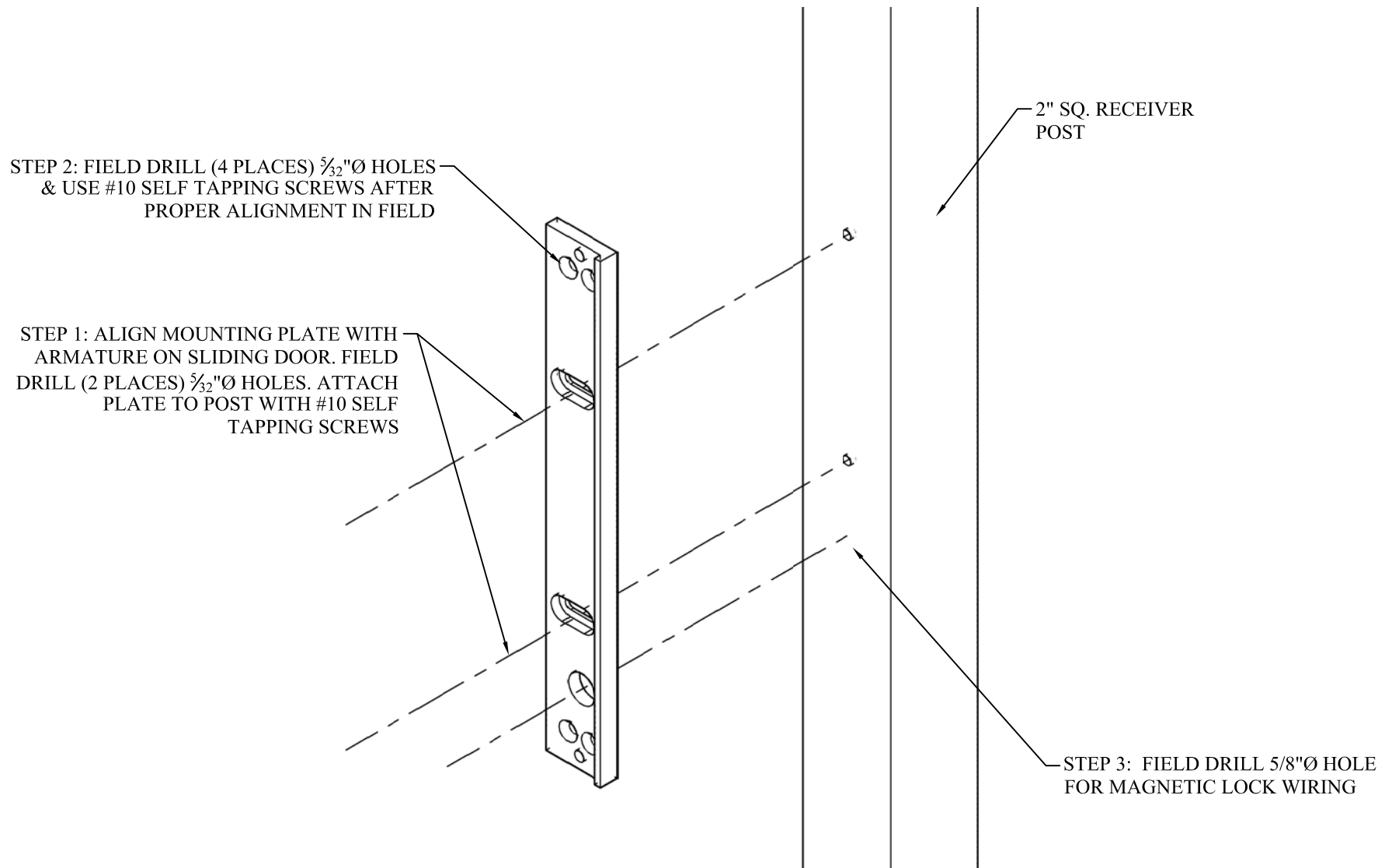


Fig.1
DETAIL
MOUNTING PLATE

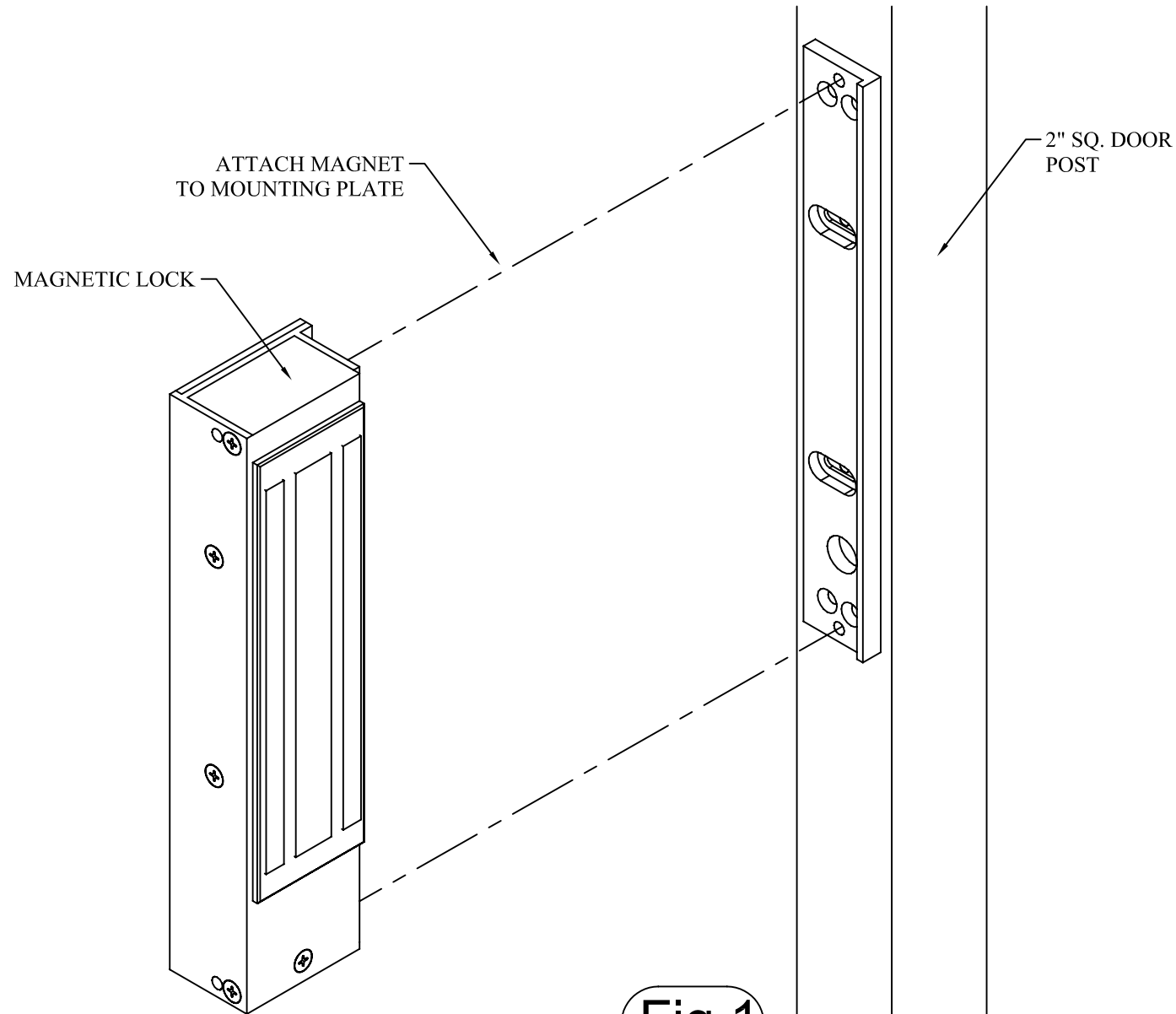


Fig.1

DETAIL
MAGNETIC LOCK

Thanks for using
WireCrafters
woven wire partitions.

Tool Cribs * Storage Lockers * Machine Guards * Mezzanine Rails * Pallet Rack Backs * Security Enclosures

WWW.WIRECRAFTERS.COM